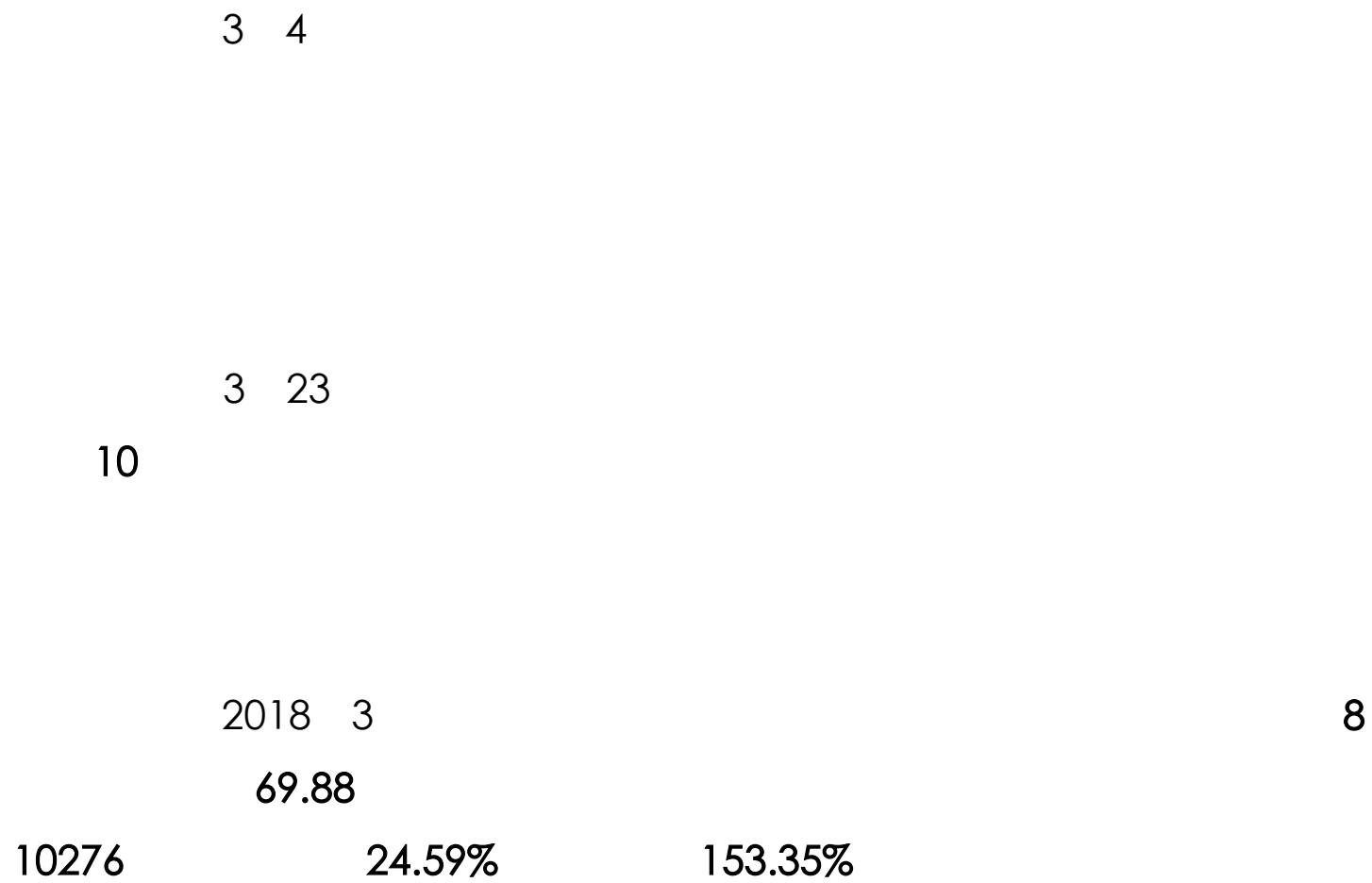




H Ü Ñ { Ö Ü y

+ € ê6(



2018 2			2.9%		3.0%
2.7%		4.4%	2.5%		2.5%
	3.6%	2		1.2%	1.
3%	1.1%		4.4%	0.5%	
1.4%		1.0%			
2018 1-2			10831		9.9%
	2.9		7379	12.3%	2.9
			68.1%		

2				
70	15			
	12		0.1	0.6
	9		0.3	2.5

2018 1-2		44626	7.9%
2017	0.7	2	
0.61%		26988	8.1%

3 18

,

3 20

30

3 28

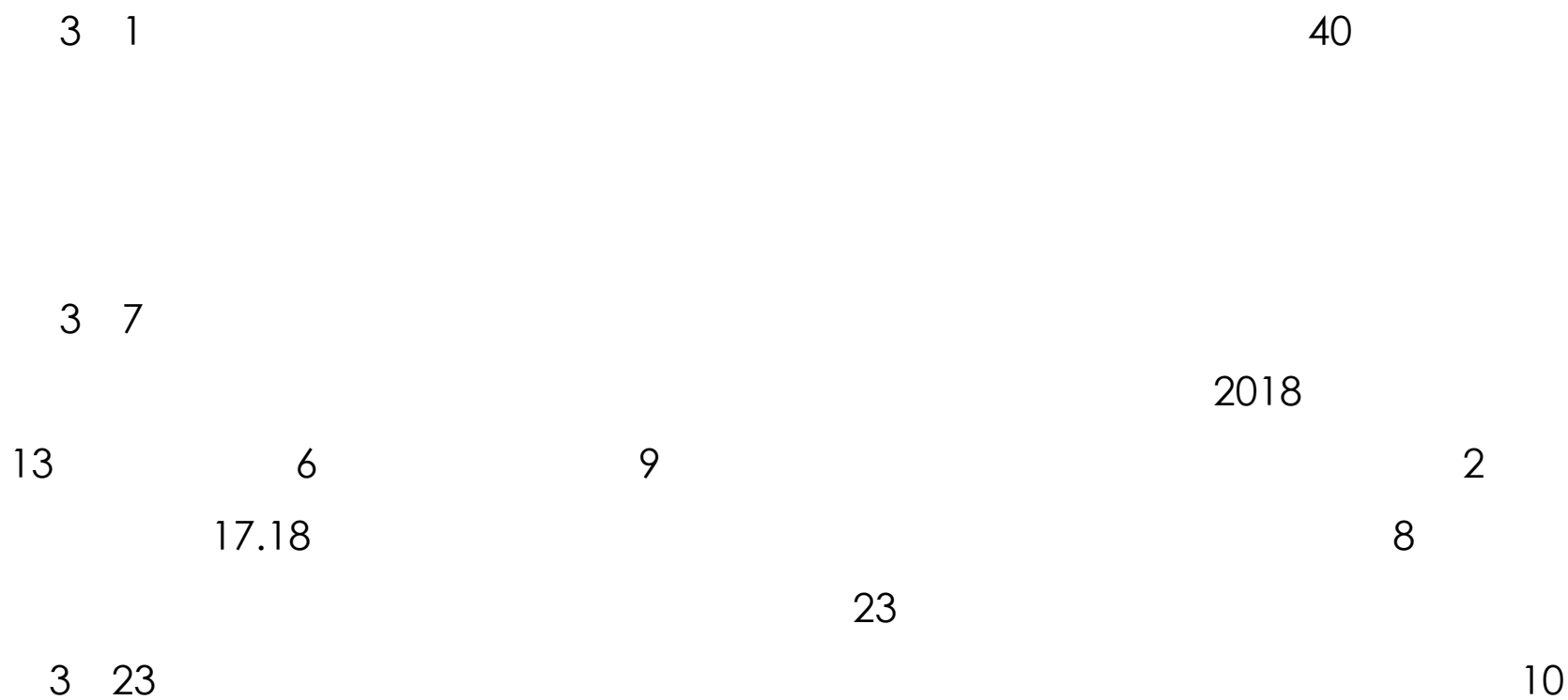
400

" "

600

" "

3-10

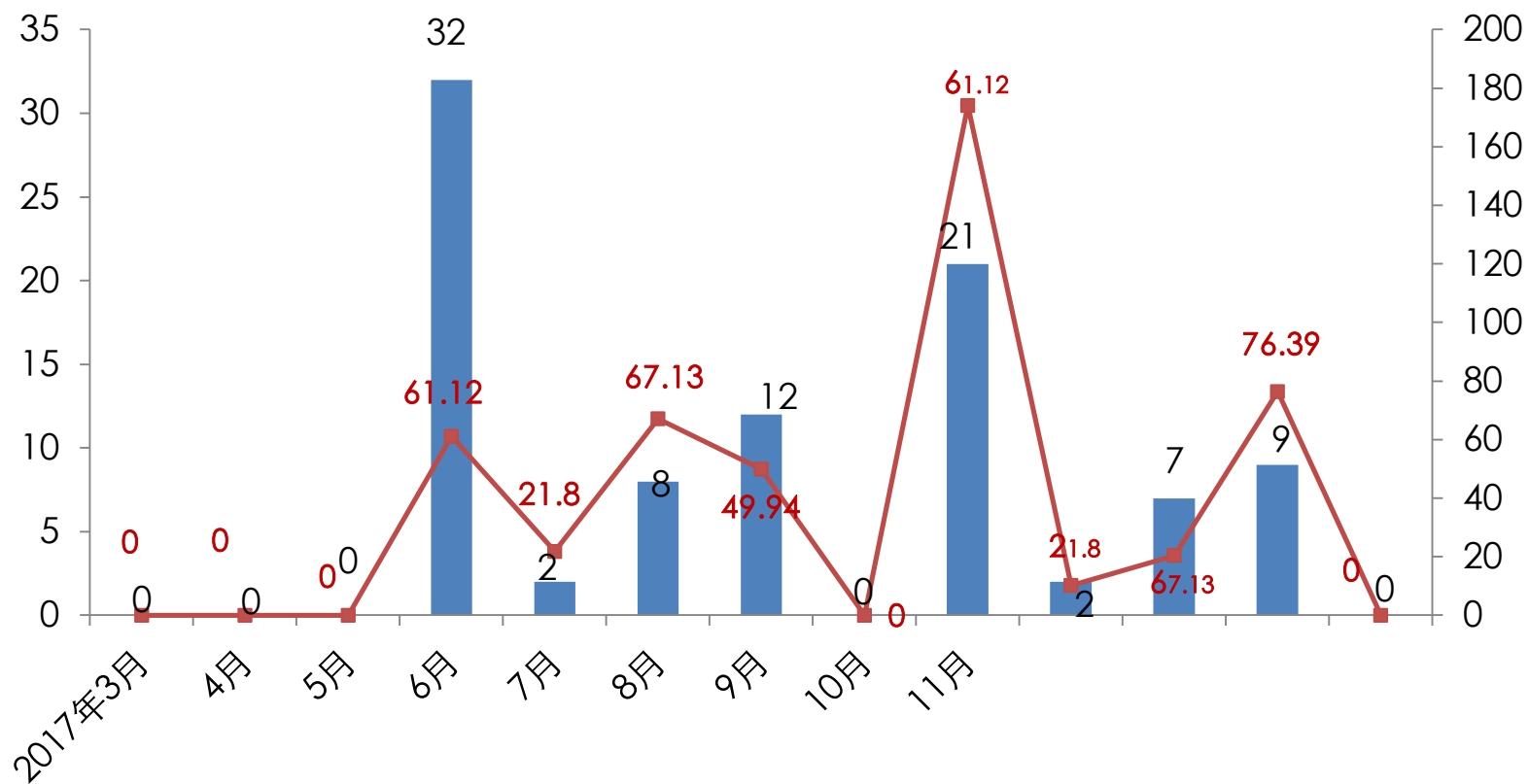


2018 3

2018 3

			()			
--	--	--	--	--	--	--

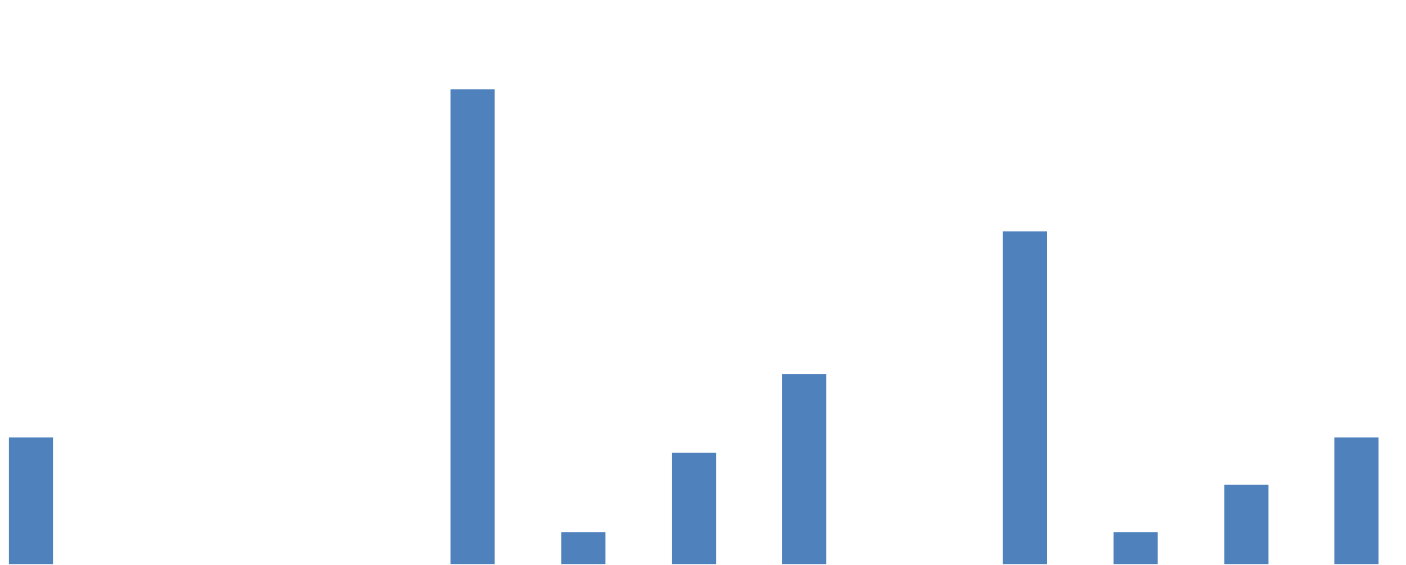
2018 3



2018 3

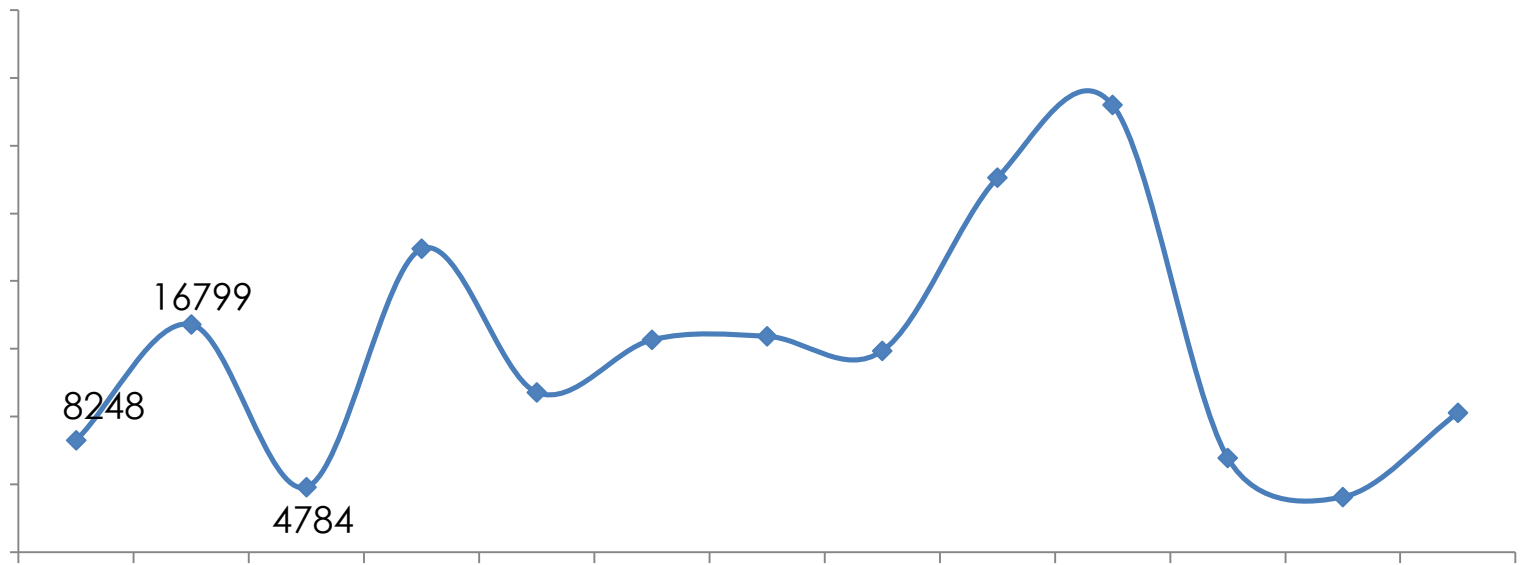
69.88

8



2018 3
24.59% 153.35%

10276





2018 3

1464

2018 3

14.42

100				3			80
	23.11%	140		28.47%	120	140	
			160				4.12%
/				3			25000
	14.43%	12000	/	53.05%	18000	18000	/
						22000	/

	2017 8	2018 3		
120	140	140	160	
		25000 /		53.05% 12000 /
18000 /		6.52%		

T

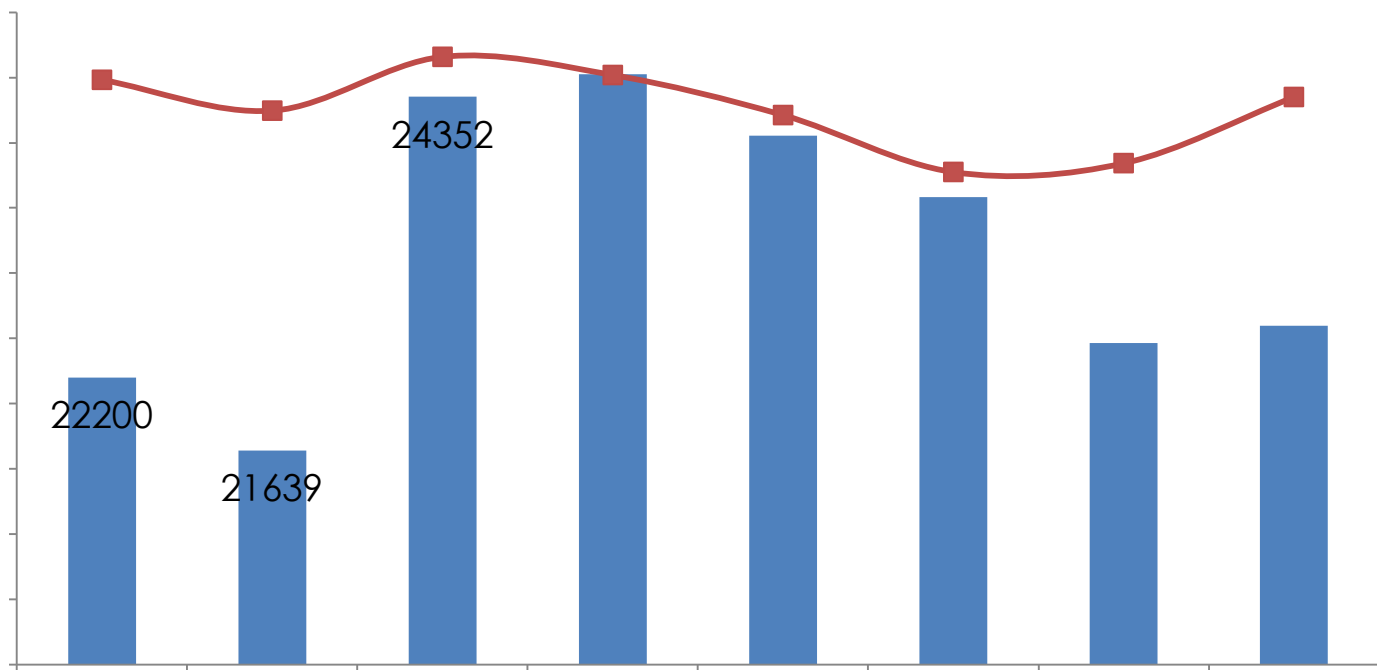


3.9

2018 3

22599

8



2018 3

18164
16421

184
6900

24709

0

